

AMENDED MT. JOSEPH VIEW SUBDIVISION

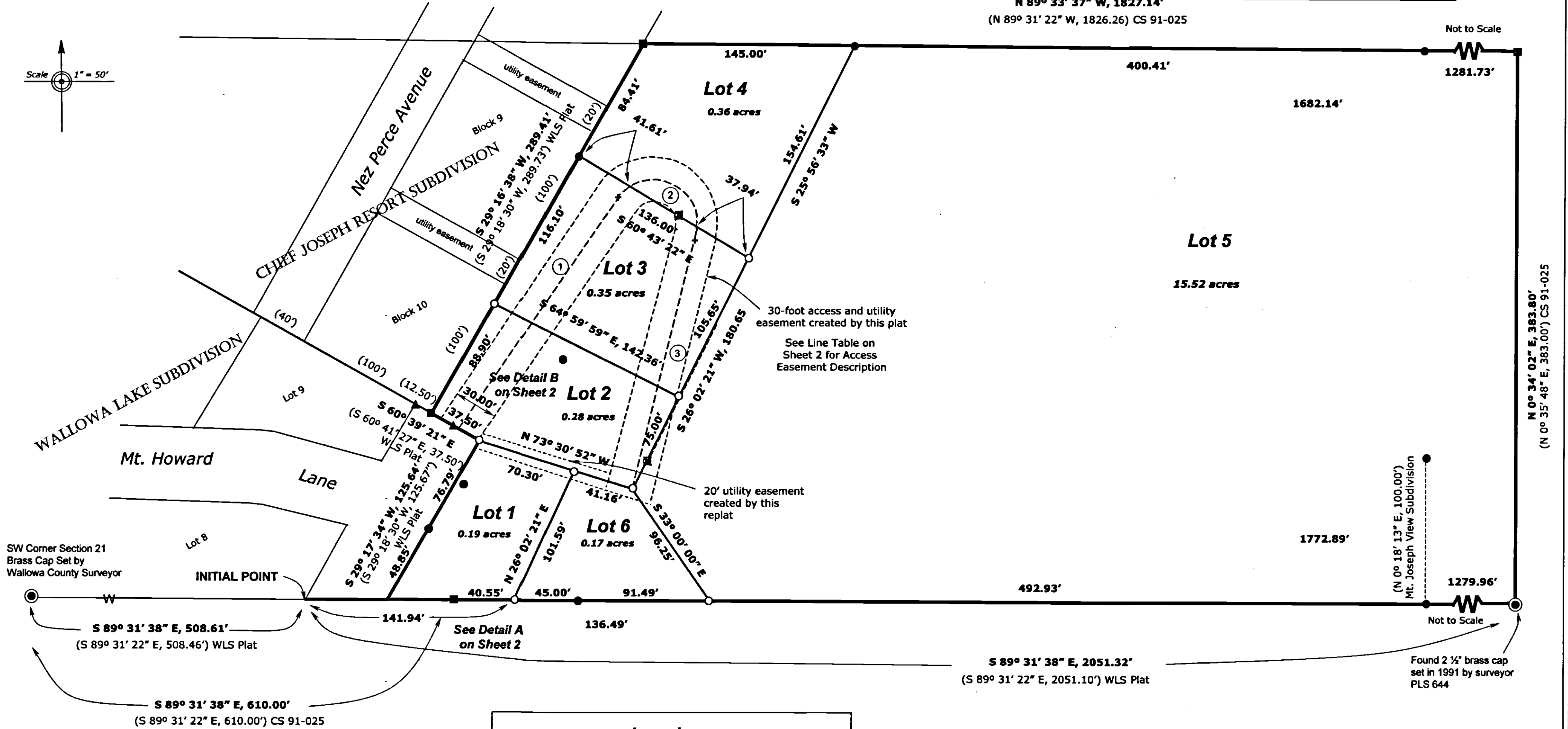
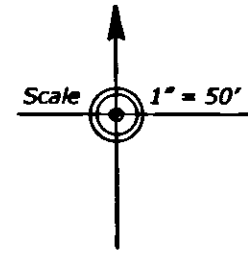
A REPLAT OF MT. JOSEPH VIEW SUBDIVISION

Wallowa County Records 09-61990, Sheet 1 of 3

Index to Sheets	
Sheet 1 -	Map
Sheet 2 -	Details and Narrative
Sheet 3 -	Surveyor's Certificate, Declaration, and Approvals

N 89° 33' 37" W, 1827.14'
(N 89° 31' 22" W, 1826.26) CS 91-025

Not to Scale



Legend	
○	Set 5/8" x 30" rebar with yellow cap stamped "LS 2530" for this replat
●	Found 5/8" rebar with yellow cap stamped "LS 2530" From Mt. Joseph View Subdivision, adopted by this replat
■	5/8" rebar with yellow cap stamped "LS 2530" From Mt. Joseph View Subdivision, but apparently lost
▲	Found 5/8" rebar with yellow cap stamped "LS 1921" from Wallowa Lake Subdivision (WLS) Plat
■	Found 5/8" rebar with yellow cap stamped "BGA Survey Marker" from CS 91-025
⊙	Found section corner as noted

REGISTERED
PROFESSIONAL
LAND SURVEYOR
Alicia Glassford
OREGON
January 21, 1992
ALICIA GLASSFORD
2530
Registration Renewal 6/30/11

Amended Mt. Joseph View Subdivision	
A Replat of Mt. Joseph View Subdivision, which is Lot 14, Wallowa Lake Subdivision, in the SW 1/4, SW 1/4 and the SE 1/4, SW 1/4 Section 21, Township 3 South, Range 45 East, W.M.	
Andrus Associates PO Box 516 Enterprise, OR 97828	Date of Survey May 31, 2009